



05
YEARS
OF EXCELLENCE



INDIA'S MOST TRUSTED BRAND

COMPANY PROFILE

Safe, Economic,
Effective And Innovative





WELCOME | 01



WELCOME TO HEER ENVIRO CARE

THE WATER EXPERT

YOU CAN TRUST.

Offering Cost-Effective & the Best
Water Purification Solutions,
Water Softeners, Geysers & more.

**With features of thorough purification
methods that produce healthy,
tasty and pure water.**





MISSION

To develop best solutions & consultations for different eating, breathing, & drinking water habits. To develop best products & services to ensure healthy being of a human body with minimal changes in lifestyles.



VISION

To cater & provide best solutions & consultations for Food, Air, & Water Industries.



VALUES

- **Heer** one of the most trusted brands when it comes to Hydrogen Rich and alkaline water products. We provide Quality goods to our customers as we care for their health.
- We at Joystick take responsibility for our impacts on society and environment. At Joystick we want to operate with a clear conscience.
- Our motivation is to do something worthwhile and sensible for people around us, while earning our share.
- It is a give-and-take situation, called reciprocity or fairness on display.

WHY CHOOSE US ?

-  **05 years of experience in the water field.**
-  **Whole range of products related water under one roof.**
-  **5 Qualified Service Engineers.**
-  **2 branch offices, easy products & services availability.**
-  **Wide range of product available in Ready stock.**
-  **Distributor of **Pure one** Authorised Service Franchise **Pure one****
-  **Distributor of **Ice drop** Cooler**
-  **More than **1000+** Customer Base.**
-  **Quick and Reliable service for all products.**
-  **Sales office for**

OUR APPROACH

Beneficial Water

Antioxidant, hydrogen-rich, alkaline, mineralised, water products are products which ensures to convert purified water to its best & beneficial form. Adds nourishing minerals, producing output **that helps body function at its optimum levels. This water is ideal for cooking as well, making sure, the food you consume stays on the alkaline side as well. Our innovative H2AAA/AAA/AA.** Products are **efficient, cost-effective, easy-to-use, environmentally friendly, and ensures the best of health.**

Customer Centric

Being a customer centric company we offer our products at reasonable prices, after a stringent quality checking process so as to ensure their fineness for future use. Also, we package our products with standard packaging material for a safe shipment to customer's end. We are also a member of the WAPTAG (Water Purification & Treatment Association of Gujarat).

OUR PRODUCTS



Domestic

Commercial

Industrial

Alkline

Water is world's
first and foremost
medicine.

WATER PURIFIERS

Reverse Osmosis Drinking Water Filter System.



Usually used for: Small office, Hospital, Gym, Restaurant, Hotel, Factory.

WATER COOLER

Supplying cold water



Usually used for:
Workplaces, Restaurants, Hotels, School, factory Hospitals and Public Places for Storing Clean Cold drinking water.



WATER PURIFIERS

Reverse osmosis is a common process to purify contaminated water by forcing water through a membrane. Water produced by reverse osmosis may be used for a variety of purposes, including desalination, wastewater treatment, concentration of contaminants, and the reclamation of dissolved minerals.

OPEN FLOW RO SYSTEM

Purification Capacity	12-15* Litres per hour *
Max Duty Cycle	60 liters per Day
Storage Tank Capacity	7 Litres (optional at extra cost)
RO Membrane	1 unit of 100 GPD
Minimum Inlet Water Pressure	0.3 kg/sq cm
Maximum Inlet water Pressure	3 kg/sq cm
Input Voltage	160-300V AC (50Hz)
Operating Voltage	24V DC
Total Dissolved Solids (TDS)	Up to 1500 ppm
Dimensions (mm)	L 415 x W 265 x H 524
Net Weight	12.5 kgs.
Power Rating	48 W



RO PLANT

Applications :

Flat, Bungalow, Row House, Gym ,Hotel , Restaurant, Medical Industries, Industrial Boilers, Manufacturing Industry, Pharma Industries

50 LPH RO PLANT

Purification Capacity	50±10* Litres per hour *
Max Duty Cycle	250 Liters per Day
RO Membrane	4 Unit of 100 GPD
Minimum Inlet Water Pressure	0.3 kg/sq cm
Maximum Inlet water Pressure	3 kg/sq cm
Input Voltage	160-300V AC (50Hz)
Operating Voltage	48V DC
Total Dissolved Solids (TDS)	Up to 2000 ppm
Dimensions (mm)	W 485 x D 300 x H 840
Net Weight	17.5 kgs.
Power Rating	75 W



100 LPH RO PLANT

Purification Capacity	100±10* Litres per hour *
Max Duty Cycle	500-600 Liters per Day
RO Membrane	3 Units of 300 GPD
Solenoid Valve	220 V
Minimum Inlet Water Pressure	0.3 kg/sq cm
Maximum Inlet water Pressure	3 kg/sq cm
Input Voltage	160-300V AC (50Hz)
Operating Voltage	24V DC
Total Dissolved Solids (TDS)	Up to 2000 ppm
Dimensions (mm)	W 485 x D 300 x H 900
Net Weight	32 Kgs
Power Rating	250 W

150 LPH RO PLANT

Purification Capacity	150±10* Litres per hour *
Max Duty Cycle	600-700 Liters per Day
RO Membrane	5 Units of 300 GPD
Solenoid Valve	220 V
Minimum Inlet Water Pressure	0.3 kg/sq cm
Maximum Inlet water Pressure	3 kg/sq cm
Input Voltage	160-300V AC (50Hz)
Operating Voltage	24V DC
Total Dissolved Solids (TDS)	Up to 2000 ppm
Dimensions (mm)	W 485 x D 300 x H 900
Net Weight	32 Kgs
Power Rating	250 W



RO PLANT

250 RO PLANT



250 AUTO RO PLANT



250 MANUAL RO PLANT



500 RO PLANT



1000 AUTO RO PLANT



2000 RO PLANT



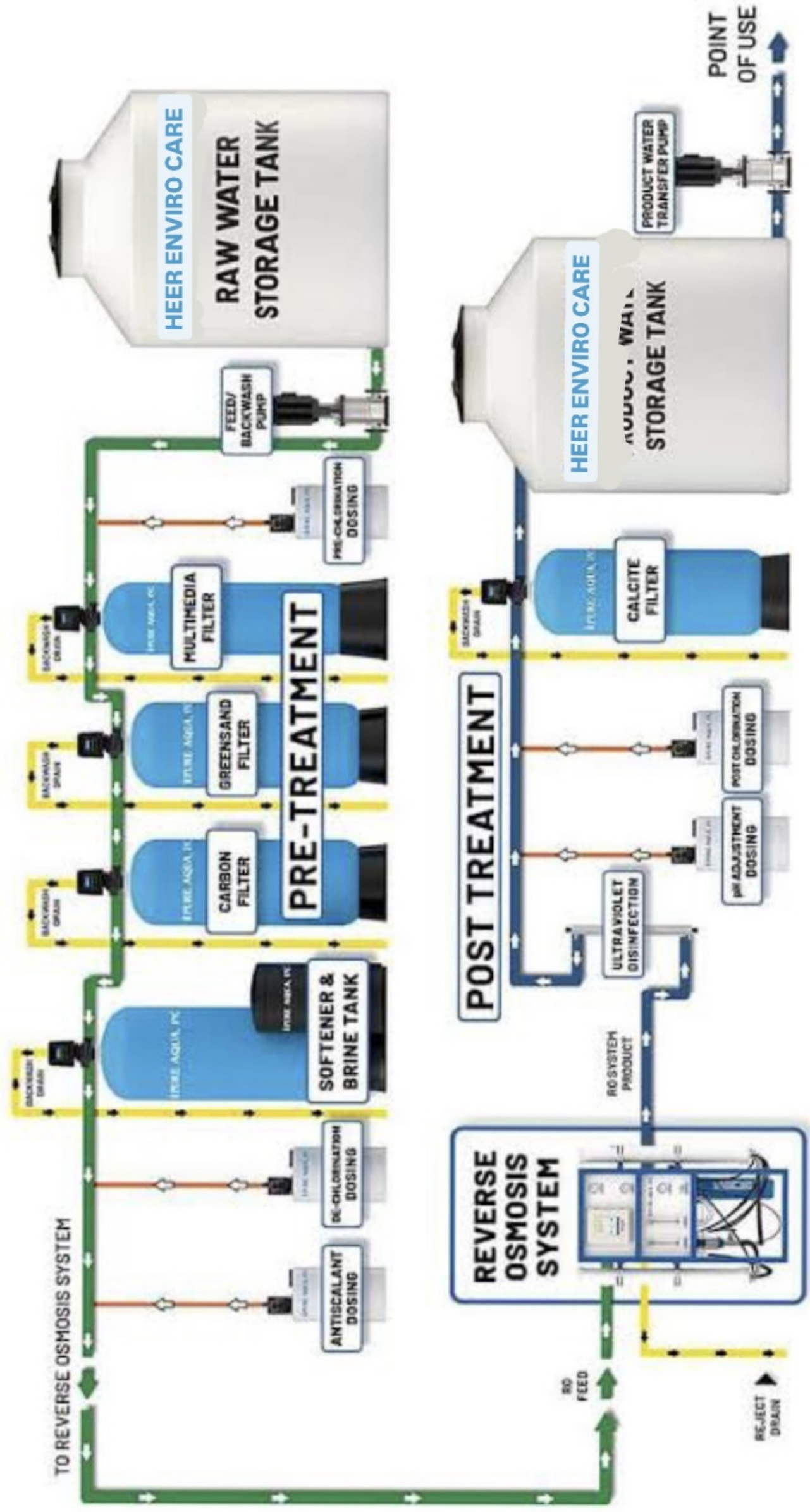
10m3 RO PLANT



10m3 SS RO PLANT



15m3 RO PLANT



SYSTEM DIAGRAM

HEER ENVIRO CARE

Our Presence in Various Industries

Packaged Drinking Water
Project With ISI Mark



Business Offices,
Apartments & Societies



Industrial Water Treatment
ETP & CETP



Laboratories



Dairy Processing



Bio Engineering



Pharmaceutical
Industrial



Green Houses

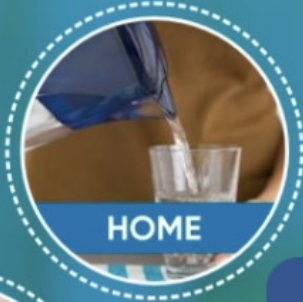


Kidney Dialysis

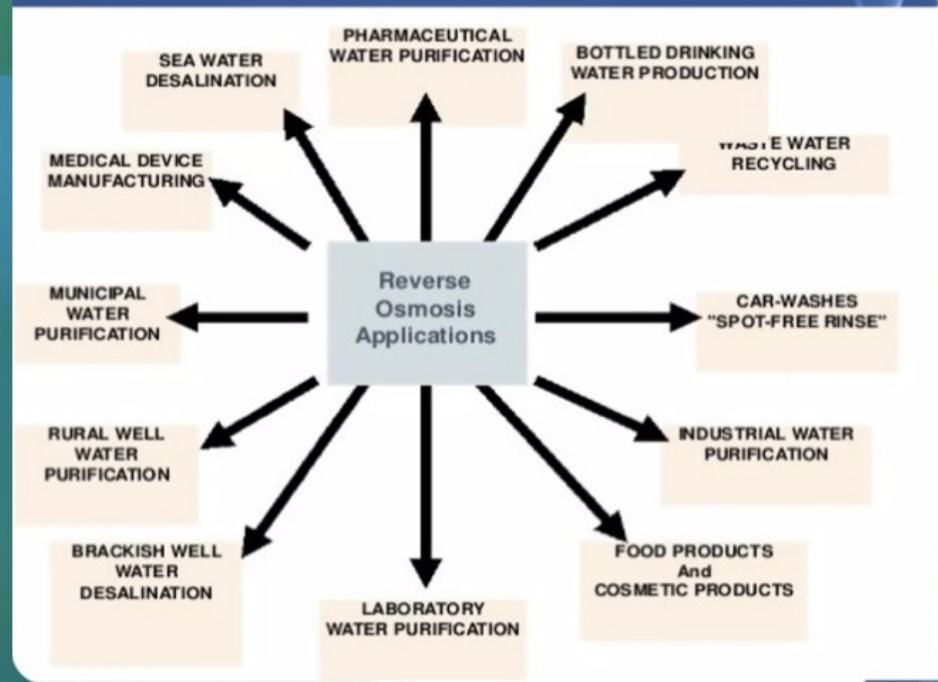


Poultry Farms





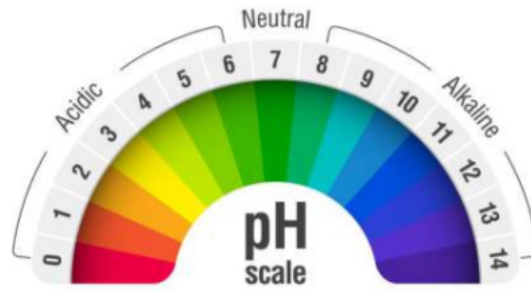
Applications of Reverse Osmosis Plants



WATER TREATMENT SPARE PARTS



pH SCALE OF WATER



- The pH of purified water is usually between 5.5 and 6.5, with 7 being neutral and anything below that being acidic. We have been drinking this water for years, and we never got educated about pH of Drinking water.
- Essentially, drinking water with a pH of 7.5 or higher is beneficial and safe. With humans eating and drinking acidic water, it is not good for their health. drinking acidic drinks, along with increased pollution. Drinking water with a slightly higher pH, i.e., alkaline water, is good for health and works as a countermeasure to acidic food, drinks, and pollution.

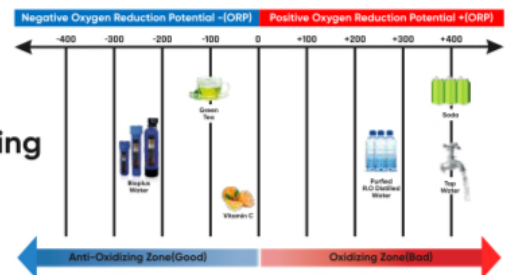
TDS IN PPM



- TDS is basically total dissolved solids. Basically, purifying water involves decreasing the TDS of the water. TDS consists of dissolved solids, including impurities and minerals. TDS is drastically reduced when water is purified, which brings down the minerals as well. And hence, we offer products that replenish the only minerals our bodies require.
- Some purifiers have a TDS controller that basically bypasses the water, letting the TDS be on the higher side. But this can have impurities, which are dangerous. Hence, we should completely purify the water, bring down the TDS to as low as possible, and then add the essential minerals.

- The oxidation Reduction Potential of a liquid indicates if the liquid is oxidizing or antioxidizing. ORP of purified water has a positive ORP of around 250 mV.

- Our Products decrease the ORP levels and tries to bring in the negative range, indicating the water acting as an antioxidizing agent.



- Drinking Antioxidant water has several benefits just like consuming any other Antioxidant substances.

OXI- DATION SCALE

WATER DISPENSER

Water dispensers provide clean, filtered water from a replaceable bottle. It is very useful equipment and can supply cold, moderate and hot water..



Usually used for: Small office, Hospital, Gym, Restaurant, Hotel, Factory



WATER SOFTNER

Appliances that remove calcium, magnesium, and other minerals from drinking water.

Usually used for:

Manufacturing, Row House & Bungalows, Agricultural Pharmaceutical, Hotels / Restaurants. Food & beverage, Hospital, Institutions.

WATER SOFTENERS

Appliances that remove calcium, magnesium and others minerals from the drinking water

WATER SOFTENERS AVAILABLE 100-4000 Ltr

HEER Water Softener 100 Ltr	
Product Name	Heer Auto Water Softener
Model	Heer Auto 100
Skid	SS 304
Skid Size (L*W*H) In Inches	36**18**62"
Filter Type	20" Jumbo Bag Assembly
Softner Vessel Size	13**54"
Resin Quantity	90 Litres
Process Valve	Fully Automatic Valve with Display
Water Flow	2000-2500 LPH
Water Pressure (Min-Max)	1.5-4.5 kg
Inlet Max Hardness (As CaCO ₃)	500 ppm
Treated Water Hardness (As CaCO ₃)	Max.50 ppm
Electric Supply	230 V AC / 6 Amp
Inlet / Outlet Connection Size	1 Inch
Drain Pipe Size	1/2 Inch



Applications :

Flat, Bungalow, Row House, Laundry, Hotel, Restaurant, Medical Industries, Industrial Boilers, Manufacturing Industry, Pharma Industries

HEER ENVIRO CARE

WATER SOFTENER

HEER ENVIRO CARE

DOCTOR
WATER™



WATER SOFTENER

COMMERCIAL PRODUCTS
ARE ALSO AVAILABLE



**THE
SOLUTION
IS HERE
WATER
SOFTENER**

GAS GEYSERS

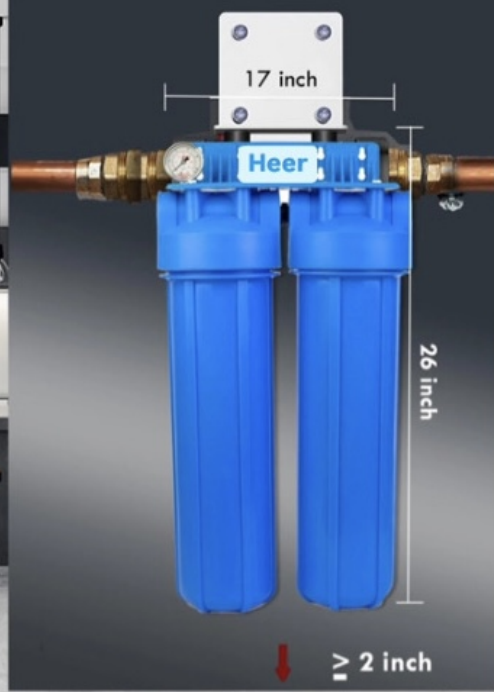
Geysers help in quickly heating water within no time and are also used for storing water for a long time



Gas geyser usually used for Flat, Bungalow, Row house.

BAG FILTER

INSTALLATION SIZE



Working Principle

STAGE 1

Bag Filter with Antiscalant Media
The depth filtration removes turbidity, dust and slits from water and antiscalant balls prevent scaling in water due to hardness

STAGE 2

Activated Carbon Filter
This stage removes colour, odour, pesticides, chlorine from water thus refining the water

FEATURES



2 STAGE FILTRATION PROCESS

The 2 Stages of filtration includes Sediment filter that removes mud, scales, turbidity in water and Activated Carbon Filter that removes chlorine, smell, pesticides, chemicals.



INBUILT PRESSURE GAUGE

The pressure gauge helps understand when to change the filters in the system. If pressure builds up then we filters need to be changed.



INLET & OUTLET 1.5 INCH

The inlet and Outlet fittings are 1.5 inch thus ensuring high flows and no pressure loss. If you connection is less than 1.5 reducers can be installed easily.



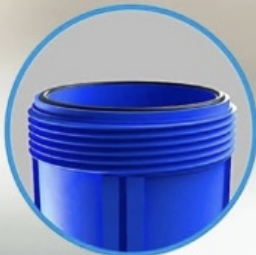
20 INCH JUMBO CARTRIDGE

The Jumbo Cartridges ensures the flow of water remains high and also the life of the cartridges is high due to high diameters of jumbo cartridges compared to regular ones.

FEATURES



1.5" NPT Thread
Standard Size



O-Ring
Sealing & Leak-Proof



Red Pressure Valve
Relief Pressure



GAS GEYSERS

Geysers help in quickly heating water with no time and are also used for storing water for long time.



Matrixx 6L

Brand	Power World
Type	6 Litres
Model Name/Number	Matrixx 6L
Dimension	44 X 13 X 30 cm
Water Head Required	2 Meter
Water Inlet & Outlet	1/2" BSP
Rated Voltage	DC 1.5 V
Heat Exchanger	Copper
Water Pipe	12 mm
Inbuilt Timer	20 min
Auto Ignition	Yes
Flame Failure Device	Yes
Exhaust	Fuel Type



Applications :

Flat, Bungalow, Row House, Laundry, Hotel, Restaurant, Medical Industries, Industrial Boilers, Manufacturing Industry, Pharma Industries

Matrixx 10L

Brand	Power World
Type	10 Litres
Model Name/Number	Matrixx 10L
Dimension	550 x 330 x 180 mm
Water Head Required	2 Meter
Water Inlet & Outlet	1/2" BSP
Rated Voltage	DC 1.5 V
Heat Exchanger	Copper
Water Pipe	12 mm
Inbuilt Timer	20 min
Auto Ignition	Yes
Flame Failure Device	Yes
Exhaust	Fuel Type



Matrixx 12L

Brand	Power World
Type	12 Litres
Model Name/Number	Matrixx 12L
Dimension	610 x 350 x 185 mm
Water Head Required	2 Meter
Water Inlet & Outlet	1/2" BSP
Rated Voltage	DC 1.5 V
Heat Exchanger	Copper
Water Pipe	13 mm
Inbuilt Timer	20 min
Auto Ignition	Yes
Flame Failure Device	Yes
Exhaust	Fuel Type



Matrixx 16L

Brand	Power World
Type	16 Litres
Model Name/Number	Matrixx 16L
Dimension	650 x 400 x 185 mm
Water Head Required	2 Meter
Water Inlet & Outlet	1/2" BSP
Rated Voltage	DC 1.5 V
Heat Exchanger	Copper
Water Pipe	14 mm
Inbuilt Timer	20 min
Auto Ignition	Yes
Flame Failure Device	Yes
Exhaust	Fuel Type



SOLAR WATER Heater

Solar energy (sun rays) is used for heating water. Water is easily heated to a temperature of 60-80 C.



Usually used for: Homes, Community Centers, Hospitals, Nursing homes, Hotels, Restaurants, Dairy plants, Swimming Pools, Canteens, Ashrams, Hostels, Industry etc.

PRESSURE PUMP

These pumps are mainly used for increasing the water pressure instantly which comes out from the faucets & appliances

Usually used for:
Row Houses,
Bungalows & Industrial



OUR CLIENTS

14
YEARS

OUR CLIENTS |



Nevi Mumbai



**ALEMBIC
pharmaceutical**



PRAJAPATI ASHRAM



TEXTILE INDUSTRY

**GRP WEAVES
TWISA WEAVES
NDR YARNS**

**DHAMALIYA FEB
SAHAJ TEXTILE
ADARSH TEXTILE**





**THANK YOU FOR
THE BUSINESS**

CONTACT US



BARDOLI

HEER ENVIRO CARE

**24/25, Amidhra estate Neer Al- Noor residency,
Navsari - Bardoli Rd,Gujarat
394620**



+91 9624042705, +91 96647 29840



heerenvirocare@gmail.com



NAVSARI BRANCH

**203'2nd floor,Amba-Kanti Bhavan,Depot
Road ,opp.Prajapati ashram,
Navsari-396445(Gujarat)**



+91 9624042705, +91 96647 29840



heerenvirocare@gmail.com